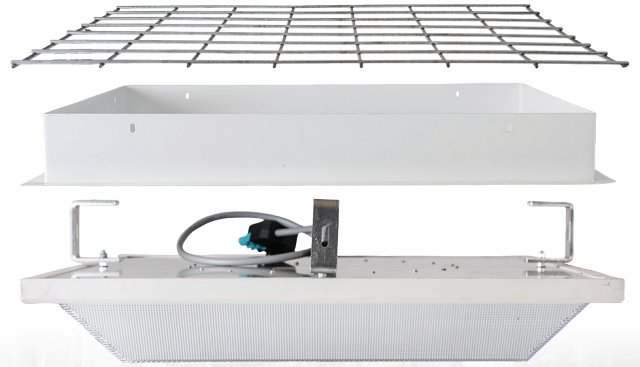


HI-GIENE Square Recess



Product Overview

Energy efficient Surface mounted luminaire suitable for any hygiene application

- Delivered Lumen: 27000
- IP66 Optical chamber
- Thermal rating: 50 °C
- Remote led driver
- Lens: Injection moulded Acrylic
- Glare free optimized light distribution
- Housing: High grade aluminum & zinc steel white powder coated
- Food grade solid silicon gaskets
- Designed & manufactured in Australia

Product Applications

- Food processing & manufacturing plants
- Food packaging
- Freezers including blast freezer application
- Chillers
- Dairy Industry
- Abattoirs
- Pharmaceutical
- Factories & processing plants
- Warehouse & Distribution centers & many more...

- Standard warranty: 5 years *(Extended warranty options 7 years* & up to 10 years*)
- Complies with food processing industry standards
- Australian made top of the range LED PCBs
- Thermal cut-out & short circuit protection
- Emergency options & wide variety of control system add - on s
- Optional trafficable steel wire mesh to cover upper ceiling cavity



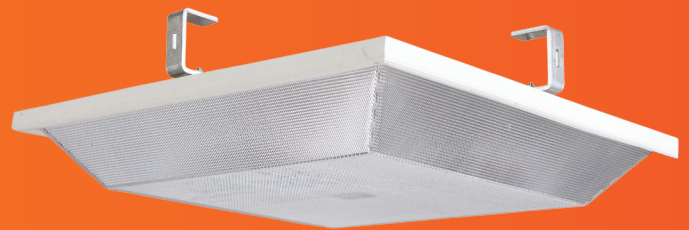


Main Features

| | |
|-------------------------|--|
| Product Name: | Hi-Giene Square Recess |
| AC Input:: | 220-240V , 50/60Hz |
| LED & Driver: | Cree & Meanwell |
| CRI Range: | CRI>80 SDCM<3 |
| CCT Range: | 4000K or 5000K |
| Luminous flux: | 27000 Lumens (Tested by NATA Accredited lab in Australia) |
| Power options: | 100W to 250W |
| Occupancy sensor: | Built-in microwave motion sensor option available (standalone & paired system) |
| Control system: | Smart device based blue-tooth control system option available |
| Emergency Options: | Manual test, Self test & Monitored |
| Retrofit LED Solutions: | Lights can be customized or mechanically redesigned to meet specific project requirement |
| Accessories: | SS screws (concealed to avoid bacterial contamination),C-brackets for various ceiling panel sizes or handles |

HI-GIENE Square Recess

Ergonomic and smart design for any kind of recess mounting application including one to one LED retrofitting of existing HID lights



Contact Us

LTC Head Office:

Sales: 1300 832 372

Email: sales@lighttc.com.au

Admin: 1300 832 372

Email: admin@lighttc.com.au

Jason McCoy

Mobile. 0439 039 142

Email. JasonM@lighttc.com.au



Address:

2 Norfolk Road,
Greenacre, NSW. 2190. Australia.

Website: www.lighttc.com.au